



# XPAND Edux 3 3D Glasses

## Revolution in 3D Education



<http://www.xpandvision.com/education/>

**XPAND**<sup>TM</sup>  
V I S I O N

## XPAND Edux 3 3D Glasses features are:

### Replaceable Batteries

Each battery averages 100 hours of active 3D. The glasses feature standard CR2032 batteries and can be easily replaced.

### Durability

XPAND Edux 3 3D Glasses Series active glasses are rugged and flexible. The glasses were designed with flex points, which extend the lifetime of the glasses.

### Automatic »OFF«

To better manage battery life, the Edux 3 3D Glasses Series glasses turn "OFF" automatically.

### Small Size

To fit children faces' better XPAND Edux 3 3D Glasses come equipped with additional nose bridges.

### The Brightest 3D Solution

3D requires as much light as possible. XPAND Edux 3 3D Glasses Series features the fastest shutter technology for the brightest image.

### Extended White-Light Range

Extended White-Light Range supports large rooms. The exact range depends on the amount of light coming from the projector or television. The average range with a 2500 ANSI Lumen projector is 40-50 feet. This is dependent on the projector and bulb life.

### DLP®-Link / White Light Communication

To further eliminate potential crosstalk, XPAND Edux 3 3D Glasses Series is designed for DLP®-Link communication between the glasses and TV/projector.

### The Highest Reliability in 3D Market

XPAND Edux 3 3D Glasses Series components are built to work in extreme conditions, further endorsing XPAND's long standing achievement of having the highest 3D reliability.

### 100% DLP®

XPAND Edux 3 3D Glasses Series is optimized to work with DLP® chips.

### No installation

XPAND Edux 3 3D Glasses Series works without any installation. The user simply turns on the glasses when they wish to view 3D content.

### 1 Year Limited Warranty

The components of the XPAND Edux 3 3D Glasses Series are tested for durability, usability and accelerated stress.

### Hygiene

The XPAND DLP®-Link 3D Glasses can be kept clean by using XPAND X-wipes.

### What type of display can I use with XPAND Edux 3 3D Glasses?

Any DLP® Link 3D ready projector or television.

### Specifications

**Lens size:** 2.2" diagonal (57mm)

**Weight:** 1.9 oz (56 g)

**3D Technology:** Active Shutter Glasses

**Lens type:** LCD

**Sync Method:** DLP®-Link, White Light

**Refresh Rate:** 96 Hz, 100 Hz, 120 Hz, 124 Hz, 144 Hz

**Temperature:** 5 - 45° C

**Battery Life:** 100 hours

**Battery Type:** CR2032 battery, 220mAh

## Thank you for your interest in XPAND. The Ultimate 3D Experience!

For additional information, please contact:

### Europe / EMEA

**Davorin Živković:**

davorin.zivkovic@xpandvision.com

**Alain Remond:** alain.remond@xpandvision.com

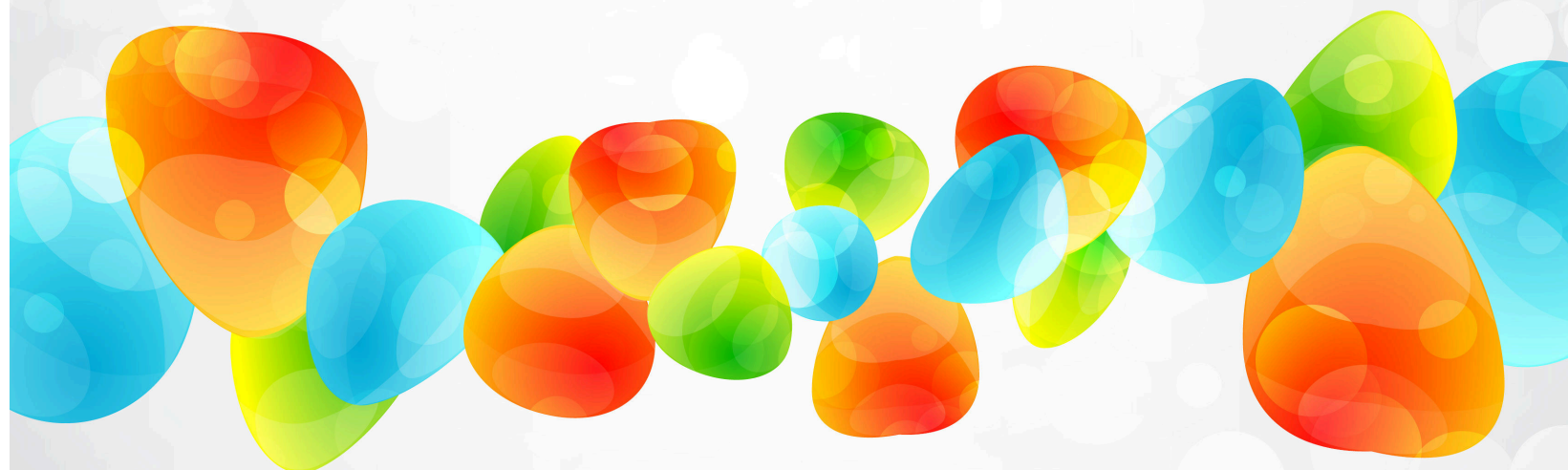
### UK and Americas

**Vince Power:**

vince.power@xpandvision.com

**David Chechelashvili:**

david.chechelashvili@xpandvision.com



<http://www.xpandvision.com/education/>

**XPAND**<sup>™</sup>  
V I S I O N